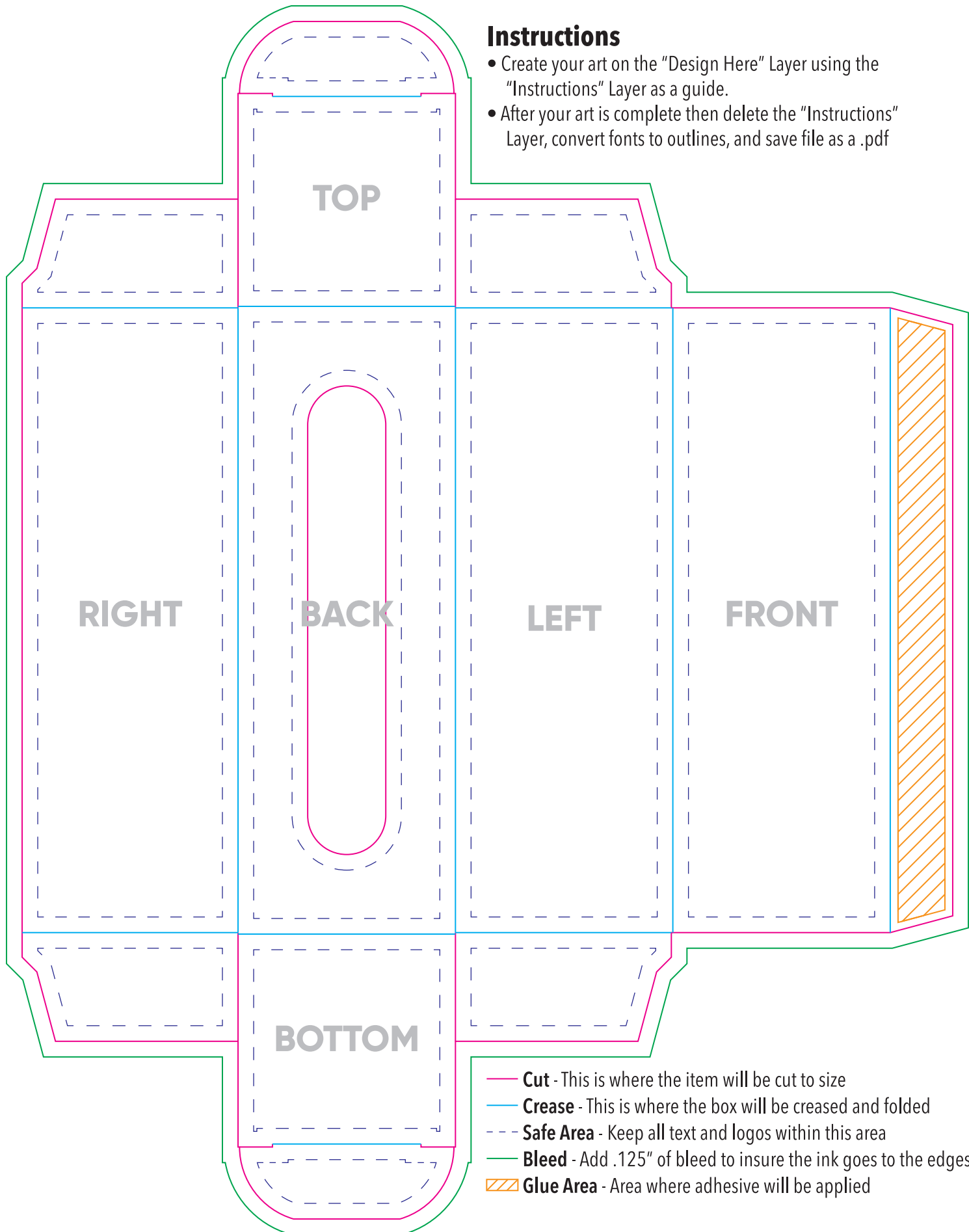


Instructions

- Create your art on the "Design Here" Layer using the "Instructions" Layer as a guide.
- After your art is complete then delete the "Instructions" Layer, convert fonts to outlines, and save file as a .pdf



- **Cut** - This is where the item will be cut to size
- **Crease** - This is where the box will be creased and folded
- - - **Safe Area** - Keep all text and logos within this area
- **Bleed** - Add .125" of bleed to insure the ink goes to the edges
- ▨ **Glue Area** - Area where adhesive will be applied